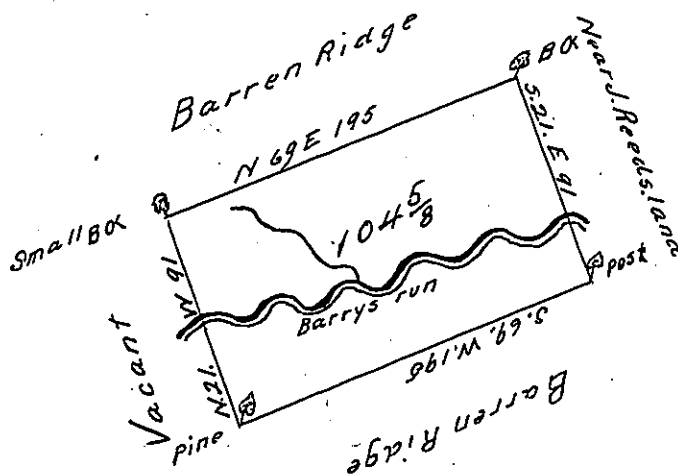


Courses & Distances

S 21 E. 91  
 S 69 W. 195  
 N 21 W. 91  
 N 69 E. 195



The draught of a tract of land Called— Situate in  
 Greenwood township Cumberland County Containing  
 One hundred & four acres & six tenths of an acre <sup>and allowance of Six per Cent</sup> Surve  
 = yed for Michael Capp Oct<sup>r</sup> the 27<sup>th</sup> 1785 in pursuance of  
 a Warrant from the Honorable Vice President of the  
 Supreme executive council Dated at Philad<sup>a</sup> June the 7<sup>th</sup> 1785  
 pr Sam<sup>l</sup> Lyon D. S.

To John Lukens Esq<sup>r</sup> }  
 Surveyor General }

IN TESTIMONY that the above is a copy of the original remaining on file in  
 the Department of Internal Affairs of Pennsylvania, made  
 conformably to an Act of Assembly approved the 16th day of  
 February, 1833, I have hereunto set my Hand and caused  
 the Seal of said Department to be affixed at Harrisburg,  
 this twenty seventh day of April 1904

*George D. Brown*  
 Secretary of Internal Affairs.